

The logo consists of the letters 'NIS' in a bold, white, sans-serif font, centered within a solid black square.

NIS

**Homeless Service
System Redesign:
Priorities and Governance Board**



Report: Regional Action Plan

REGIONAL ACTION PLAN



FISCAL ANALYSIS

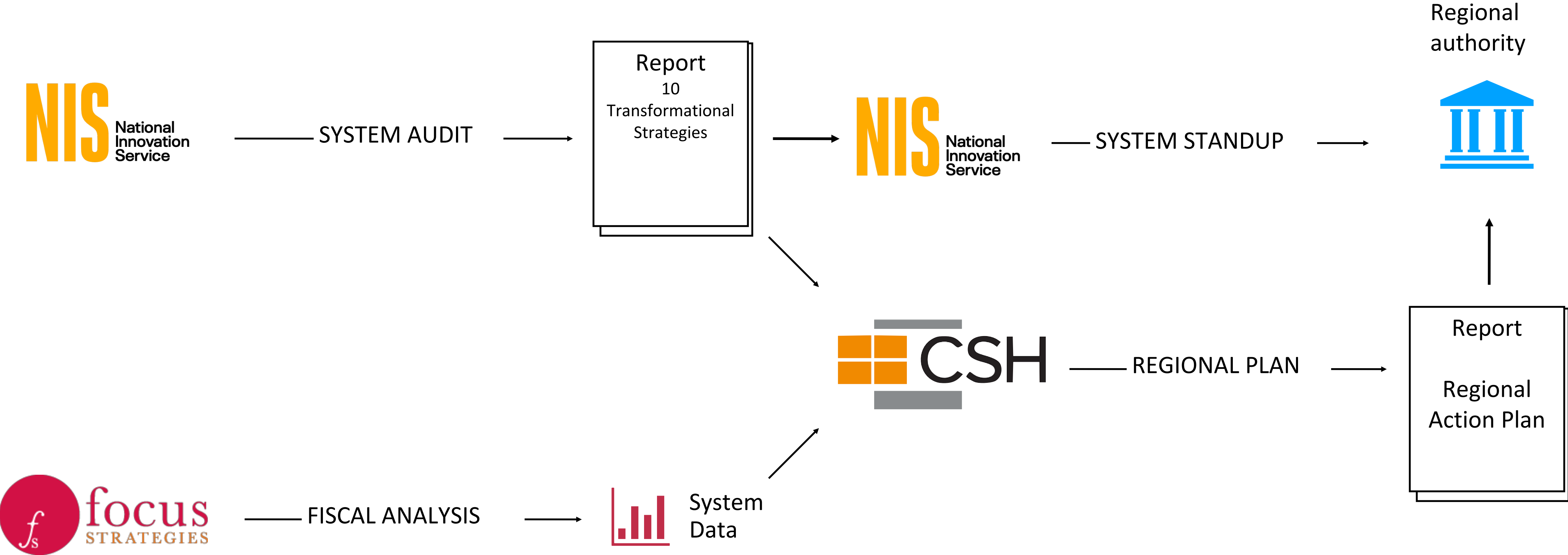
Report: 10 Transformational Actions

SYSTEM AUDIT

SYSTEM STAND UP



OVERVIEW



PROCESS

- NIS is connecting with people across the region to get input
- Examples of consulted groups: people experiencing homelessness, community coalitions, government agency staff, councils, and suburban community representatives.

Today's Goals

- Outline the desired elements of a governing board
- Design board and governance structures

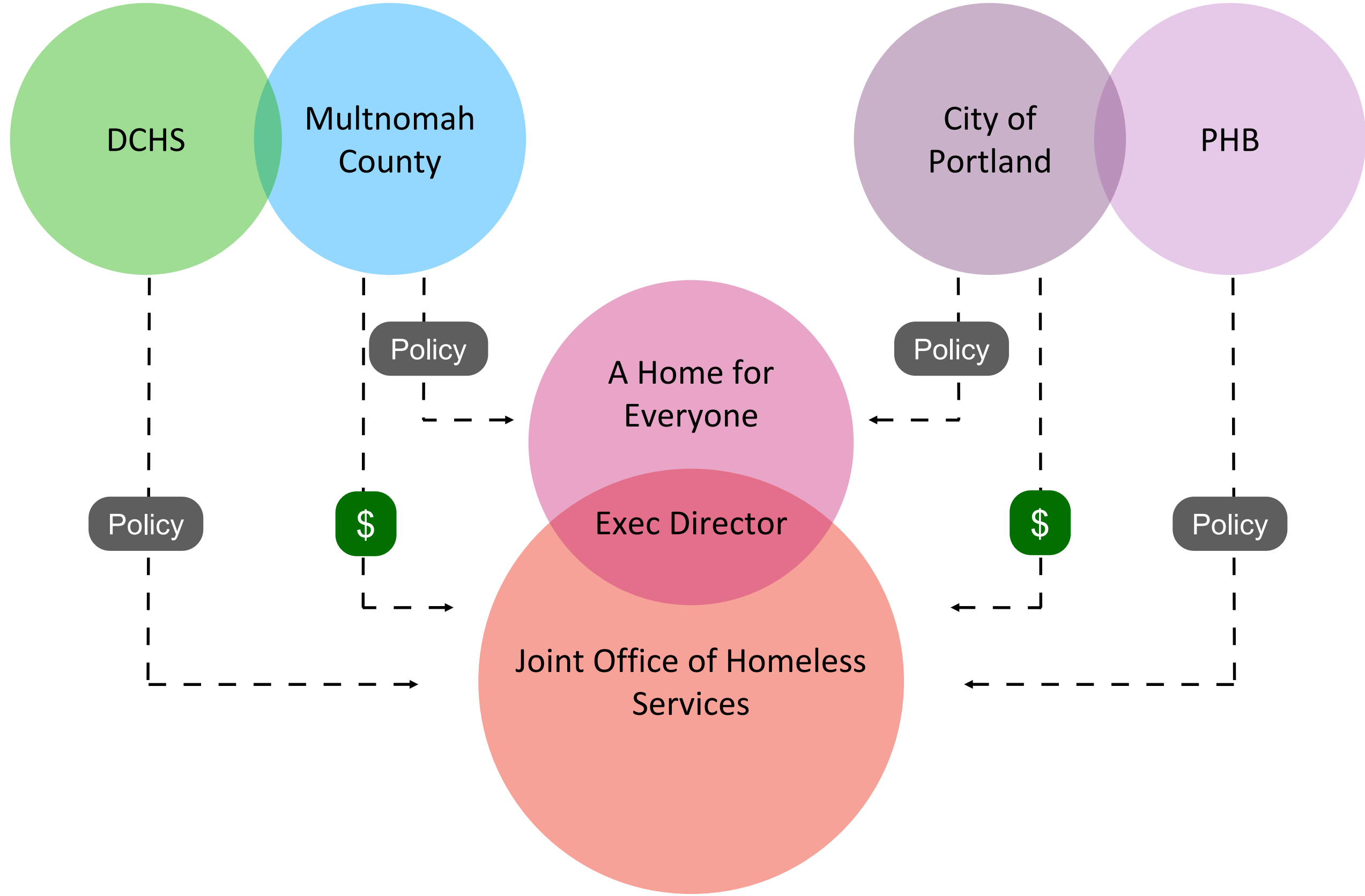
YOUR answer

**How will the regional authority
be governed?**

EXAMPLES

from other communities

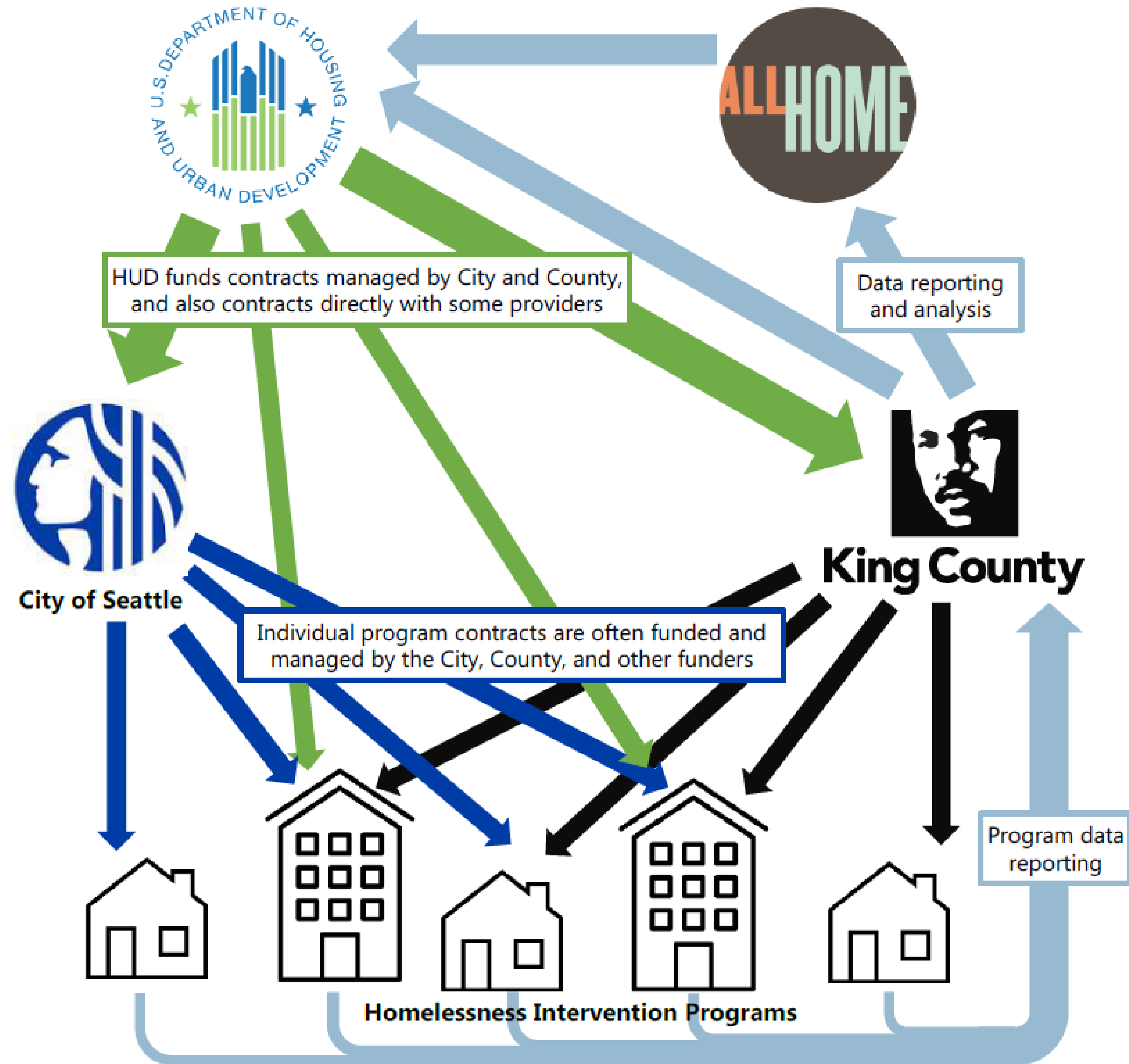
PORTLAND



In 2015, the City of Portland and Multnomah County established a Joint Office of Homeless Services to streamline services and housing opportunities, which is housed with the county.

The Joint Office administers service contracts, conducts the point-in-time count, manages data systems, oversees data reporting and evaluation, monitors federal funding streams, and proposals for federal funding streams.

The Joint Office funds a nonprofit organization, A Home for Everyone, which coordinates policy-making and planning across governments and private-sector partners but does not lead implementation or manage services.



Source: King County Auditor, 2018

BOARD STRUCTURE



Executive Committee

(Multnomah County, Portland, Gresham, Home Forward, Meyer Memorial Trust, Portland Leadership Foundation, Portland Business Alliance, Coordinating Board Co-Chairs)

Coordinating Board

(People with lived experience, system providers, culturally specific organizations, housing, faith, business, public safety, education, DHS, healthcare, legal, advocates)

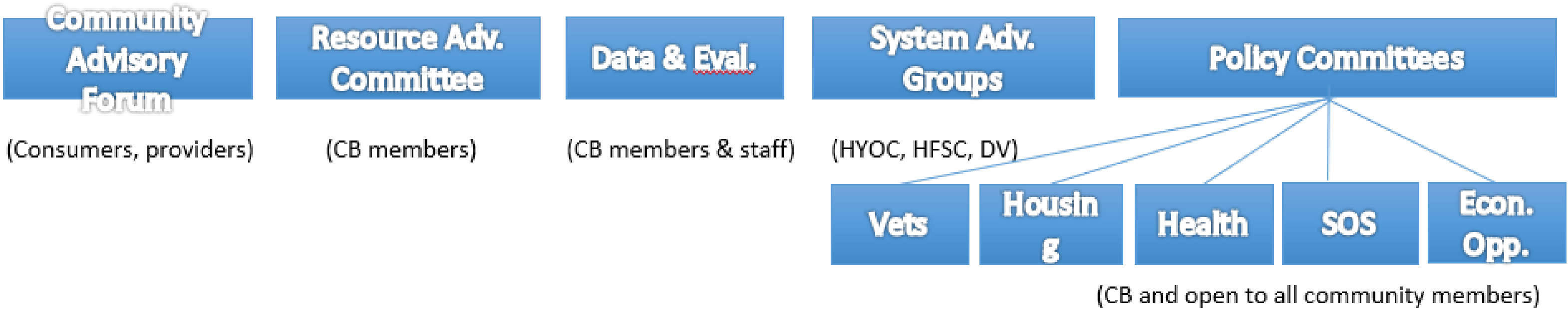
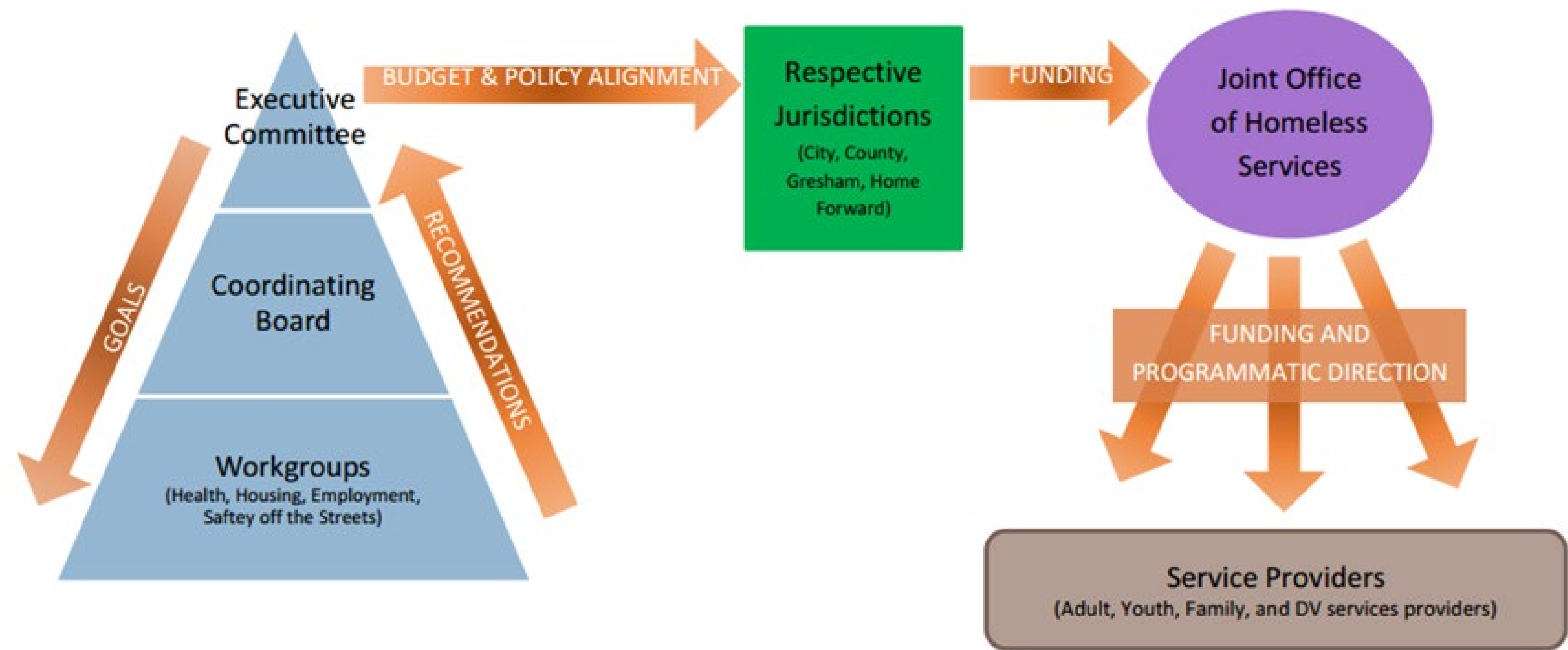
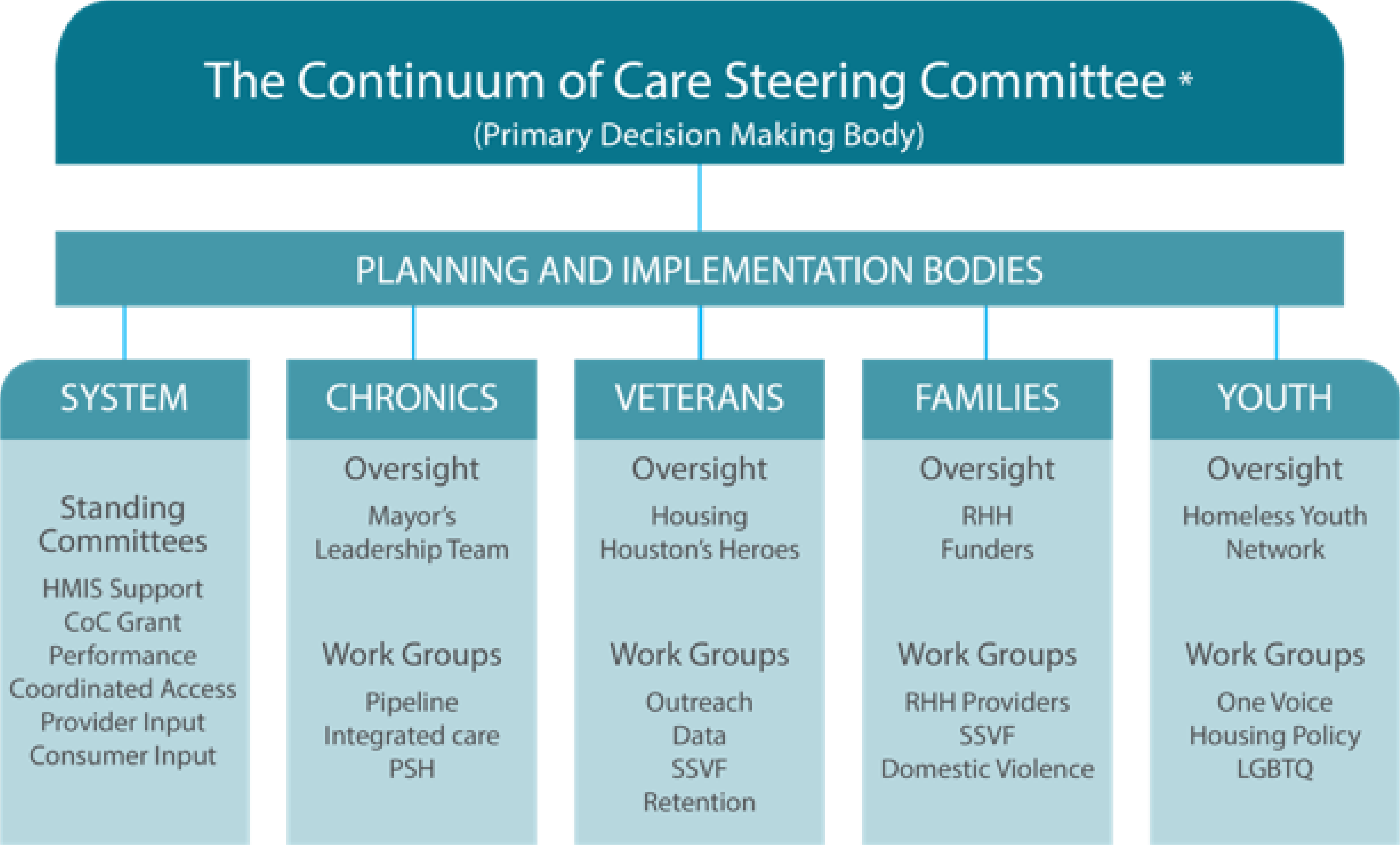


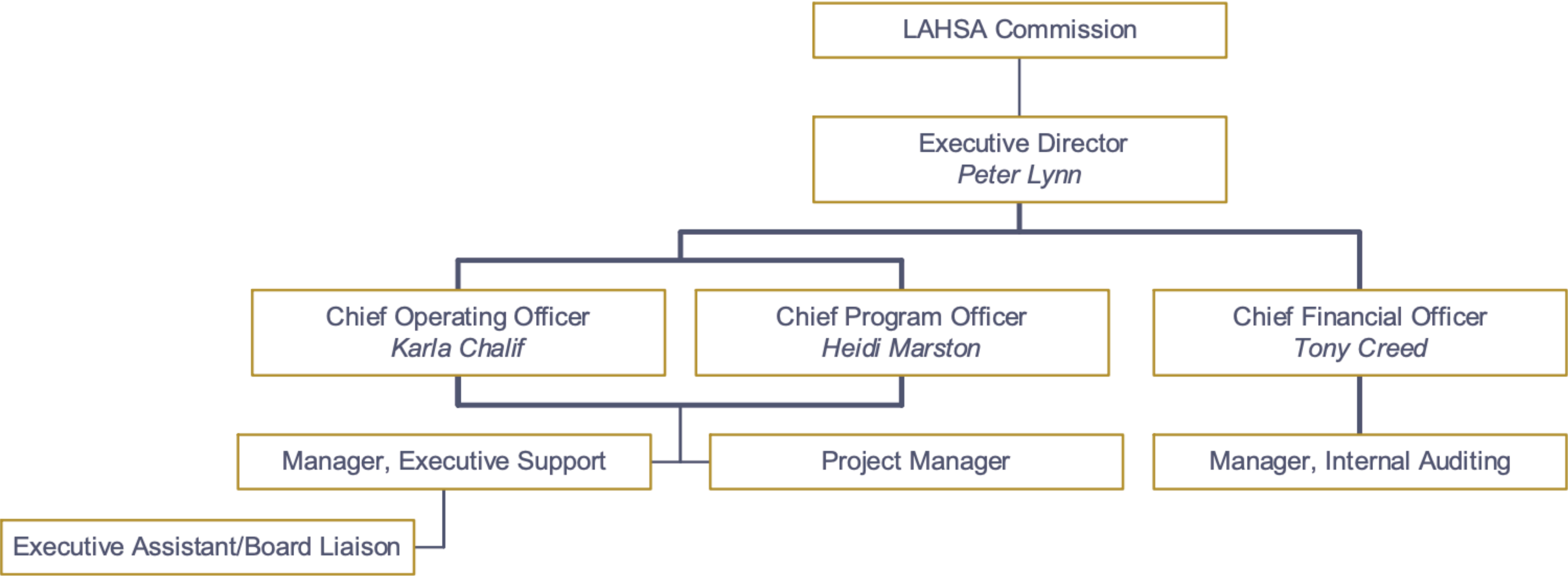
Figure 1. A Home for Everyone Operational Flow



Note. Orange arrows indicate the active, transactional spaces in between entities.



Los Angeles Homeless Services Authority
Organizational Chart
Executive Department



LAHSA Commission

LAHSA is governed by a politically appointed, 10-member Commission. Five members are selected by the County Board of Supervisors and five are chosen by the Mayor and City Council. Our Commission has the authority to make budgetary, funding, planning and program policies. Commission meetings are held at 9am on the fourth Friday of each month, except during November and December, when they are held on the third Friday of the month.

County Members

Confirmed by the Los Angeles County Board of Supervisors



Sarah Dusseault

Appointed by Supervisor Solis

📌 Vice Chair



Noah Farkas

Appointed by Supervisor Kuehl



Lawson Martin

Appointed by Supervisor Barger



Irene Muro

Appointed by Supervisor Hahn



Jacqueline Waggoner

Appointed by Supervisor Ridley-Thomas

City Members

Confirmed by the Los Angeles City Council



Kelli Bernard

Appointed by Mayor Garcetti

📌 Chair



Wendy Greuel

Appointed by Mayor Garcetti



Mitch Kamin

Appointed by Mayor Garcetti



Booker Pearson

Appointed by Mayor Villaraigosa



Kelvin Sauls

Appointed by Mayor Villaraigosa

**What works
/
What doesn't work**



- Small
- Technical expertise
- Decision-making



- Vague decision-making process
- Lack of transparency
- Large, rotating membership

King County + Seattle

DEFINING CRITERIA

What functions should the governing board hold?

e.g. policy-setting, metric development

What are the characteristics of an ideal board?

e.g. size + representation

*sometimes it's helpful to start with what you don't want!

**What skills and knowledge
do we need represented on
the governing board?**

PROTOTYPING GOVERNANCE

With your criteria in mind, create your ideal board.

On each post-it, write the expertise it represents.
(each post-it represents a seat on the board)

e.g.

LIVED
EXPERTISE

LIVED
EXPERTISE

PUBLIC
HEALTH

HOUSING

Reflection Questions

- Does every seat contribute to the function of the board?
- Which expertise isn't represented on this board?

Consider the additional functions that the system will serve and additional expertise that isn't represented on the governing board.

Create any additional boards.



team@nis.us
nis.us