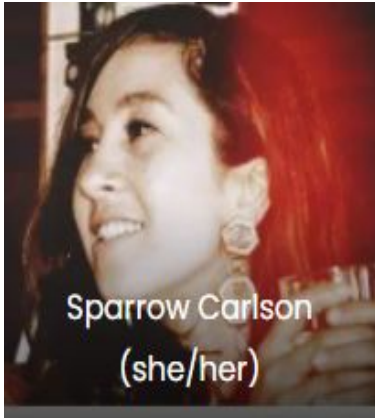
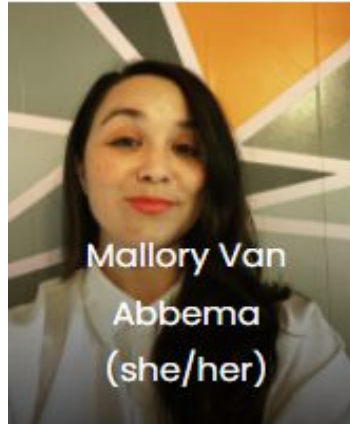


The Sub-Regional Planning Team!



Seattle Planner



East King Planner



South King Planner

Sub-Regional Planning

- Unique needs of 39 cities in 7 sub-regions
- Ongoing equitable engagement
 - Engaged over 500 Individuals
 - Sub-Regional Tables
- Sub-Regional Analytics: Funding + Landscape Assessments
- Service and funding agreements specific to sub-regions






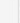


What is the Regional Services Database?

Comprehensive dataset

Sortable by type, city, and sub-region

First time this information has ever been collected in one place

<input type="checkbox"/>	 Program Name	 Service Provider Organi...	 Sub-Region	 Jurisdiction/CoS Council...	 Type of Program	 PSA?
▼	Hopelink Count 7					
10	Kenmore Shelter	Hopelink	North King County	Kenmore	Emergency Shelter	No
11	Duvall Place	Hopelink	Snoqualmie Valley	Duvall	Permanent Housing	No
12	Avondale Park Shelter	Hopelink	East King County	Redmond	Emergency Shelter	No
13	Avondale Park TH-Unsubs...	Hopelink	East King County	Redmond	Transitional Housing	No
14	Heritage Park	Hopelink	East King County	TBD	Permanent Housing	No
15	Avondale Park TH-Subsidiz...	Hopelink	East King County	Redmond	Transitional Housing	No
16	Hopelink Place	Hopelink	East King County	TBD	Permanent Housing	No
	SERVICE PROVIDER ORGANIZAT...					
▼	Lake Washington Unit Count 1					
17	LWUMC Safe Parking Progr...	Lake Washington United...	East King County	Kirkland	Safe Parking	No
	SERVICE PROVIDER ORGANIZAT...					
▼	LifeWire Count 4					
18	LifeWire Shelter	LifeWire	East King County	TBD	Emergency Shelter	Yes
19	Lifewire Regional RRH-DV (...)	LifeWire	Countywide	N/A	Rapid Rehousing	Yes
20	My Friend's Place JC-RRH	LifeWire	Countywide	N/A	Rapid Rehousing	Yes
21	Lifewire Regional RRH-Exp...	LifeWire	Countywide	N/A	Rapid Rehousing	Yes

Five Year Plan

The strategic roadmap to
transform the homelessness
response system

Sub-Regional Implementation Plans

Now what does it mean to
implement and act on those
goals in each sub-region?



Our Five Year Plan is our shared roadmap.

It is an evidence-based, data-driven tool to align our work and decision-making in service of our neighbors experiencing homelessness, and our community as a whole.

More than
62,000
PEOPLE
experienced homelessness
at least once in 2022.

Source: WA State Dept. of Commerce

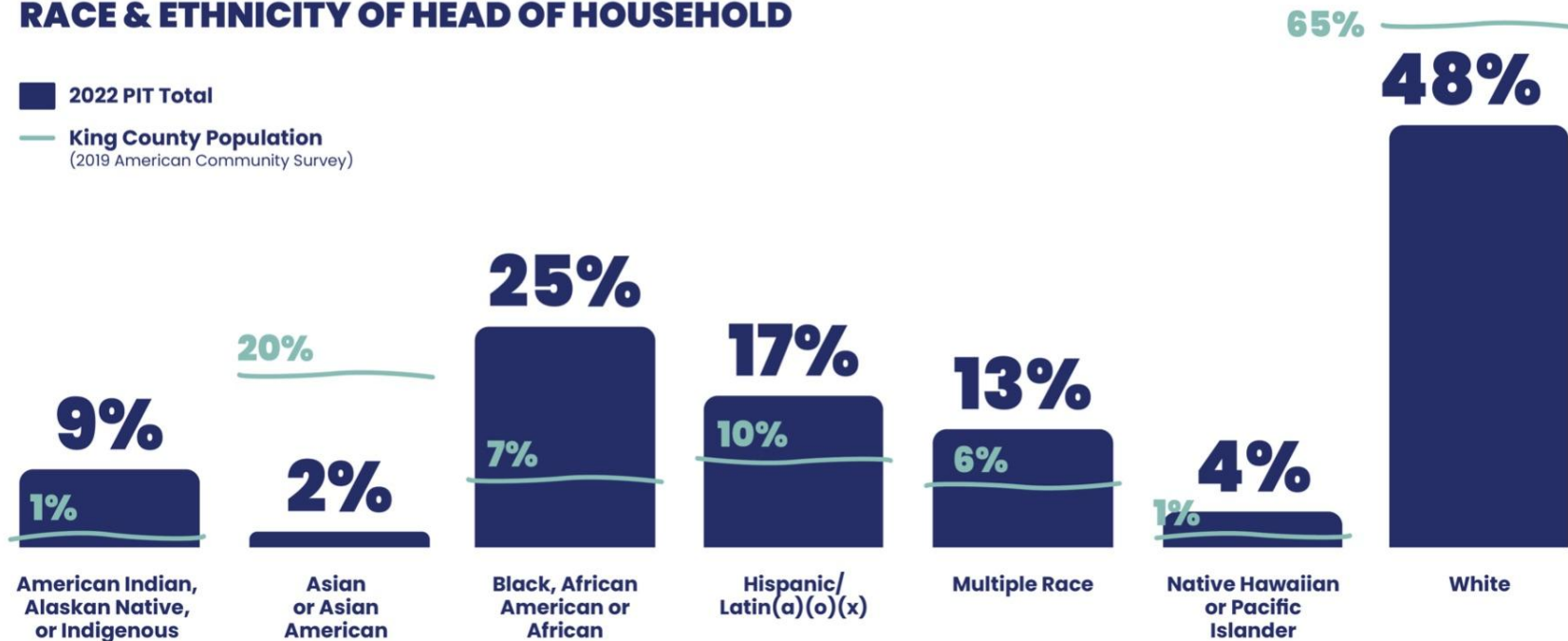


2022 Point in Time Count

RACE & ETHNICITY OF HEAD OF HOUSEHOLD

■ 2022 PIT Total

— King County Population
(2019 American Community Survey)





**Solving
homelessness
will take
all of us.**

Our Role

CURRENT STATE
Scarcity

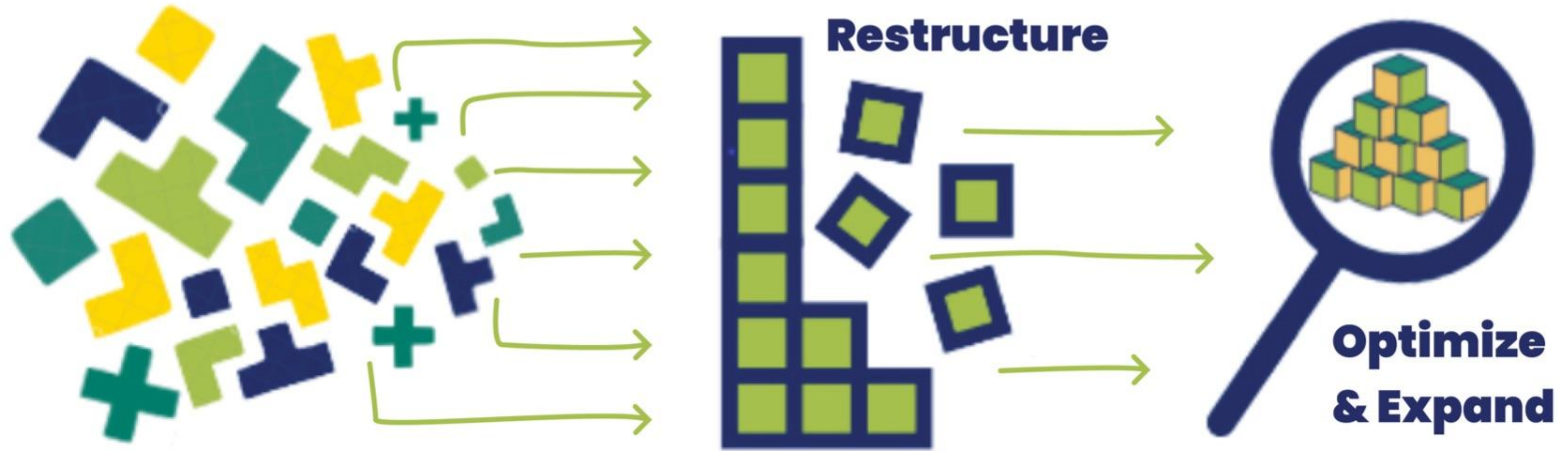
FUTURE STATE
**Shared
Abundance**



An experience that feels chaotic and unsafe, polarized and limited in what it can achieve.

A single, efficient, successful system that has affordable housing for all with accessible high-quality services on-demand countywide.

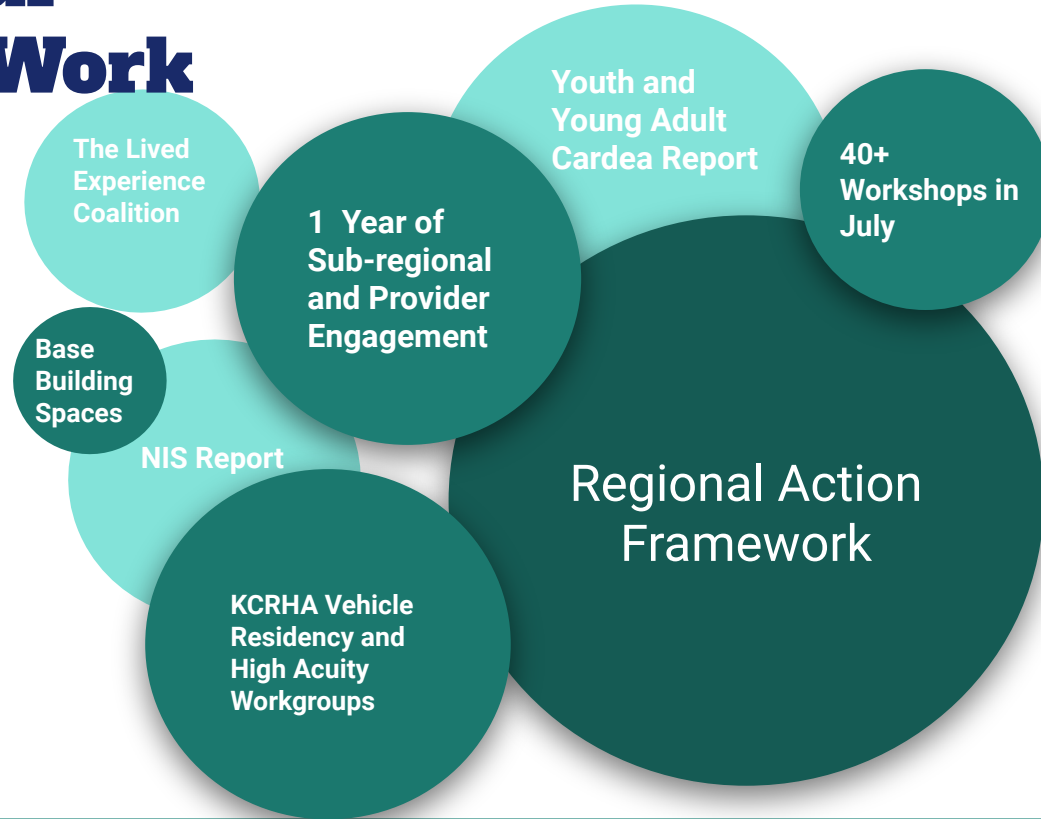
Our agency offers the infrastructure, coordination, and centralization of resources and work to make that scale possible.



How We Got Here



Building on Our Community's Work



Engaging Countywide

Over 1000 Partners Engaged Throughout Process

Workshops

One-on-Ones

Focus Groups

Regional Tables

Focus On

Sub-populations

Geography

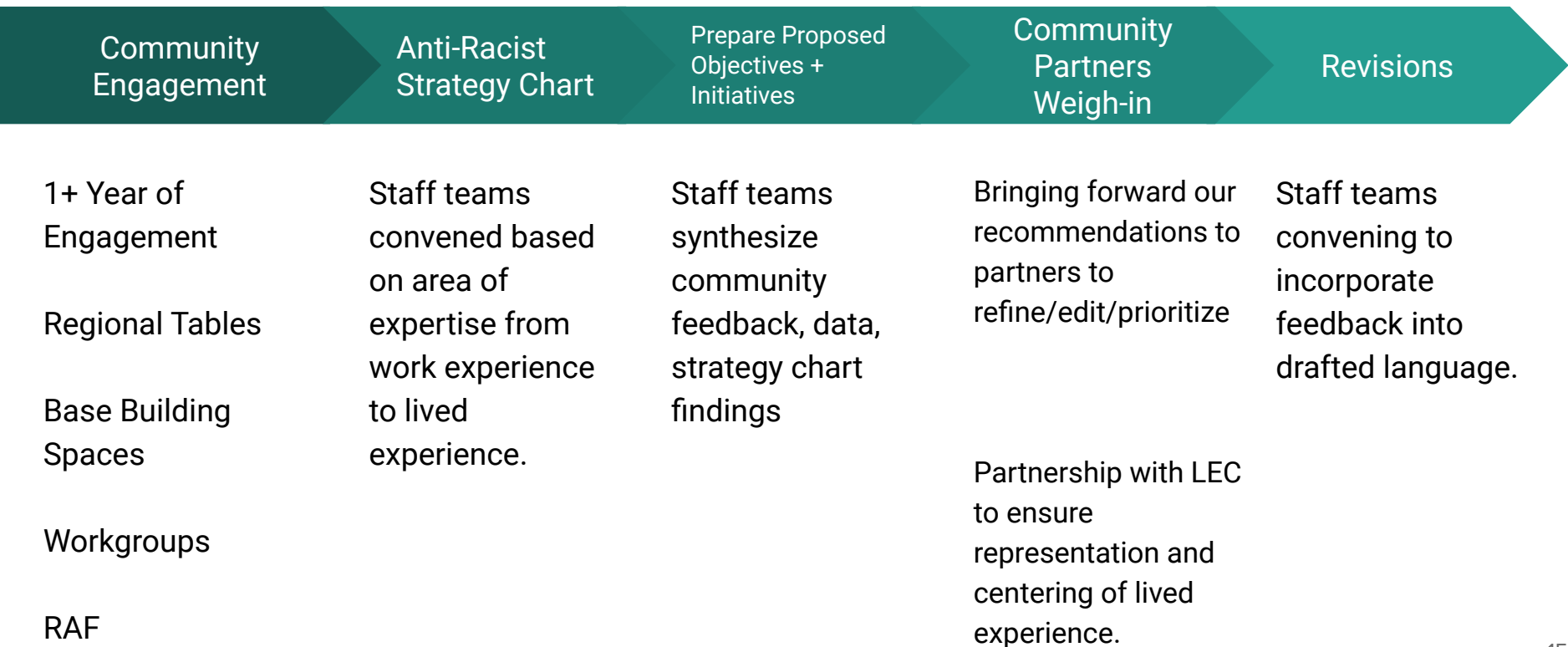
Program Type

Sub-Population and System Strategies

- **High Acuity Individuals**
- **People Living with Disabilities**
- **Native & Indigenous Communities**
- **Immigrants and Refugees**
- **Black and African American Communities**
- **Youth and Young Adults**
- **Families with Children**
- **LGBQIA2S+ Adults**
- **Seniors and Elders**
- **Veterans**
- **Vehicle Residents**
- **Survivors of Gender-Based Violence**

- **Carceral Systems**
- **Healthcare Systems**
- **Behavioral Health Systems**

Sub-Population Strategy Development



Five-Year Plan



Our Roadmap centers seven strategies

- 1. Dramatically reduce unsheltered homelessness**
- 2. Restructure the service system**
- 3. Deliver accessible high-quality services**
- 4. Reduce impact of racism**
- 5. No family with children sleeps outside**
- 6. Every unaccompanied youth and young adult has a home**
- 7. A unified, regional approach**



A dark blue topographic map of a region, likely around Seattle, Washington, serves as the background for the top half of the slide. It shows various geographical features like hills, valleys, and water bodies, with labels for places like ALKI, YAKOMA, and LAKE WALES.

1

Dramatically reduce unsheltered homelessness

We need to:

- **Expand temporary and permanent housing** to meet our community's need
- **Improve housing and supports** for individuals with the most significant needs
- **Assess and update our existing infrastructure**
- **Scale up “Partnership for Zero”** to achieve “Functional Zero”

1 Our current housing gap is immense

**UNITS NEEDED
BY 2027**

**CURRENT STOCK
(2022)**

GAP

TEMPORARY HOUSING

$$23,018 - 4,148 = 18,870$$

PERMANENT HOUSING

$$48,271 - 3,052 = 45,219$$

1 Temporary Housing Options



Recovery Housing

- Harm Reduction
- Treatment
- Recovery Support
- Sober Living



Medical Respite

- Provides ongoing healthcare
- Reduces emergency room visits



Micro-Modular Shelter

- Tiny Home, Pallet Shelter



Emergency Housing

- Small capacity
- Non-congregate
- Privacy & dignity



Safe Parking

- Connection to Services



RV Parking

- Connection to Services
- Connection to Utilities

1 Permanent Housing Options

Permanent Supportive Housing

- Comprehensive support services

Long-Term Care

- Elderly or disabled
- Ongoing assistance with daily living

Supported Employment

- In-depth job placement
- Housing subsidy

Neighborhood Housing

- Typical rentals without specialized services

Shallow Subsidy

- Fixed funding or percentage of rent
- Voluntary services

Shared Housing

- Voluntary roommate matching

Voucher Bridge

- Close the gap between voucher and market rent

RV/Trailer Park

- Low-cost housing
- Connection to Services

A topographic map of a region, likely in the Pacific Northwest, showing various geographical features like mountains, rivers, and towns. The map is in shades of blue and white. A large, light blue circle with a white border is positioned on the left side of the map, containing the number 2.

2

Restructure the service system to improve capacity, supports, and efficiency

- Scale **prevention and diversion** to reduce inflow
- Optimize **funding for services and operations**
- **Support our front-line workers** and stabilize the workforce
- **Redesign our outreach services** to geographically cover our entire county, serve those who need it most, and improve coordination
- **Improve our severe weather responses**
- Grow and diversify our **portfolio of service providers**
- Standardize and **support person-centered healing**



2

One of the most effective ways to address homelessness is to end it before it begins.

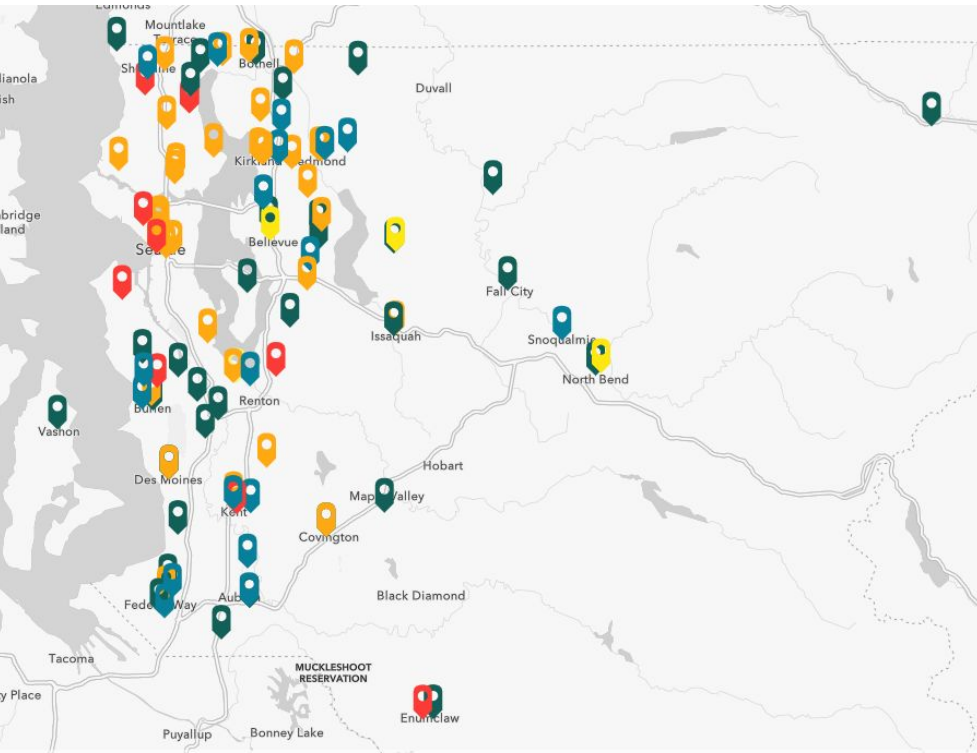
If flexible diversion and prevention funding were available,

**UP TO 1,175
HOUSEHOLDS**

**may be diverted from
homelessness each year.**

2

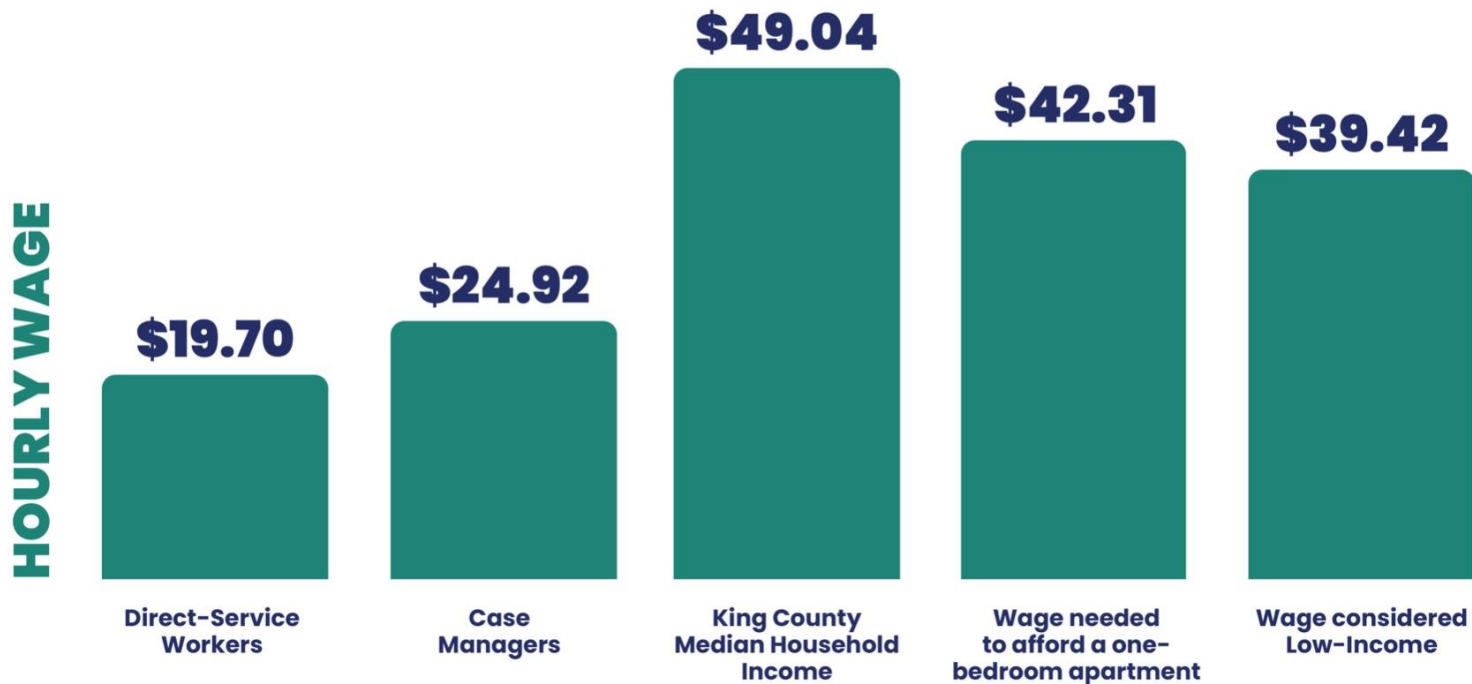
Addressing Severe Weather Response Will Continue to Be a Top Priority



Across severe weather events, the KCRHA has already supported responses that have served over

1,000
individuals seeking
refuge from
weather conditions.

2 We must support our frontline workers





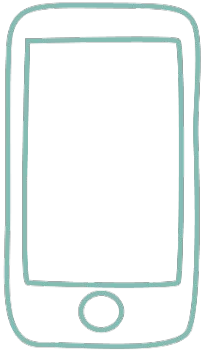
3

Deliver Accessible, Accountable, and Responsive Services

- Develop and refine the **Ombuds** process of ensuring that services are **accountable to people experiencing homelessness**
- Develop **continuous feedback channels** for program participants (web and mobile)
- Develop a process for participants to **control and manage their own personal data** (HMIS)
- Support **real-time information on resource availability**

3

Responsive services look like:



- **Partnering with 211** to ensure homelessness services information is up-to-date and accurate.
- **Online platforms that are easy to use**, and available to all
- Developing resources that **center the needs and desires of those who will use them**
- **Continually monitoring and improving** our systems

A dark blue background featuring a topographic map with contour lines and geographical labels like 'ALKI', 'GOWELL', 'SQUAR', 'OILMAN', 'RAIL ROAD', 'SEATTLE', 'LAKE', and 'COMO'.

4

Reduce the impact of racism

- **Center equity across all services**
- **Improve data collection** to better understand how homelessness is experienced across all populations, including:
 - Immigrants and refugees
 - Black and African Americans
 - Indigenous and Native Americans
 - People living with disabilities
 - LGBTQIA2S+.
- **Be accountable and transparent** to community partners that represent communities most impacted.



4

We prioritize equity, because we know that the human consequences of racism and inequity affect us all.

We know the causes of homelessness disproportionately impact BIPOC individuals:

- Inaccessible Housing
- Redlining and Preventing Home Ownership
- Poverty/Deep Poverty
- Segregation/Rental Housing Discrimination
- Incarceration
- Access to Quality Health Care

A dark blue background featuring a topographic map with contour lines and place names like 'ALKI', 'GOWELL', 'SQUAR', 'OILMAN', 'RAIL ROAD', 'HEATH', and 'LAKE'.

5

No Families with Children Sleep Outside

- Improve coordination so **all families experiencing homelessness have rapid pathways to housing**
- **Partner with healthcare and education systems** to prevent homelessness and provide wrap-around services
- Expand evidence-based program interventions, and **scale up what we know works**

5

Families with children make up 17% of people experiencing homelessness. The majority of children are under 10 years of age.



A dark blue background featuring a topographic map with contour lines and place names like 'ALKI', 'GOWELL', 'SQUAR', 'OILMAN', 'RAIL ROAD', 'SEATTLE', and 'LAKE'.

6 Every youth and young adult has a home

- **Expand housing and program interventions** for youth and young adults
- Collaborate across the system to **prevent youth and young adult homelessness, and reduce inflow** into the system
- **Integrate a strengths-based and healing approach** across all programs and policies
- Develop a **coordinating body of Youth and Young Adults** to inform our system

A dark blue background featuring a detailed map of King County, Washington. The map shows various geographical features, including water bodies, roads, and city boundaries. The number 6 is prominently displayed in a white circle on the left side of the map.

6

Of the 13,368 individuals experiencing homelessness in King County on the morning of the 2022 King County Point-in-Time Count, 850 individuals (6.5%) were unaccompanied Youth and Young Adults





7

The Region Acts as One to Address Homelessness

- **Partner with all 39 cities in King County** to consolidate and streamline funding
- **Elevate Coordinated Entry** as the primary pathway for housing placement
- **Develop coordinated and tailored sub-regional implementation plans**
- **Partner with Systems that lead in serving**
 - a. *Veterans*
 - b. *Seniors and Older Adults*
 - c. *People transitioning out of jails and hospitals*



7

**WE MUST ADOPT A UNIFIED
REGIONAL APPROACH**

**We all want
homelessness
solved; solving it
will take all of us.**

Evaluation

System Outcomes:

- Folks Accessing Homelessness Services
- Exits to Permanent Housing
- Rates of Return to Homelessness

Process Metrics:

Each Plan Objective has a supportive metrics

Public Facing Dashboard to Demonstrate Progress

Five Year Plan

The strategic roadmap to
transform the homelessness
response system

Sub-Regional Implementation Plans

Now what does it mean to
implement and act on those
goals in each sub-region?

Sub-Regional Implementation Plans

What: Initiatives tailored to the sub-region informed by data and partners.

Who: Cities, healthcare agencies, behavioral health providers, public safety partners, homelessness providers, community based organizations.

How: Sub-regional tables and city staff are plan contributors.

When: Building out initiatives in support of 5-Year Plan Objectives over coming months.

