



KCRHA
King County Regional Homelessness Authority

Severe Weather Response: Sheltering our Unhoused Neighbors

King County Regional Homelessness Authority
2023 Winter Weather Seminar

Mission & Theory of Change

Our mission is to significantly decrease homelessness throughout King County, using equity and social justice principles.

If we create a homeless response system that centers the voices of people with lived experience, then we will be able to meet needs and eliminate inequities, in order to end homelessness for all.



Purpose and Structure

The **Interlocal Agreement (ILA)** describes the role, scope, and purpose of the KCRHA:

- **Governing Committee & Implementation Board** for accountability (currently under review)
- Unified **planning and coordination of funding and services** for people experiencing homelessness countywide.
- **Oversight** on policy, contract management, and performance management.
- **Continuum of Care** functions, as required by the U.S. Department of Housing and Urban Development to receive federal funding, formerly housed within “All Home”.
- Creation of a new **Ombuds Office** to serve as a single point of contact for customers.
- Establishment of **clear metrics and milestones** for measuring success and for ensuring accountability and transparency.





City of Seattle



King County



KCRHA

King County Regional Homelessness Authority

INFRASTRUCTURE

Housing Capital and Development



CoC Funded Programs



Shelter



PROGRAMS

Diversion



Rapid Re-Housing



Coordinated Entry



HMIS



OTHER SERVICES

Outreach



Encampment
Cleans



Behavioral Health
and Crisis Response



Role of KCRHA in Severe Weather

To provide an emergency system of services, including opening safe, short-term emergency day and nighttime shelters, and coordinating outreach to unsheltered people.



Stages of Response

- **Monitoring**
- **Pre-Activation**
- **Activation**
- **Operations**
- **De-Activation**
- **Post Event**



Winter Weather Response Tiers

Tier 1	Tier 2	Tier 3
<ul style="list-style-type: none"> Daily high temps 45 or below for 3 days Real Feel (wind, rain) conditions predict dangerous situations 	<ul style="list-style-type: none"> Daily high temperatures predicted at 40 degrees or below for 3 days OR daily low temperatures predicted at 35 degrees or below for 3 days OR snow/ rain accumulation greater than 2 inches 	<ul style="list-style-type: none"> Daily high temperatures predicted at 35 degrees or below for a single day OR daily low temperatures predicted at 30 degrees or below for a single day OR snow/rain accumulation greater than 4 inches
<ol style="list-style-type: none"> Increased Outreach and Survival Supplies 	<ol style="list-style-type: none"> Increased Outreach and Survival Supplies Opening of Temporary Emergency Shelters 	<ol style="list-style-type: none"> Increased Outreach and Survival Supplies Opening of Temporary Emergency Shelters Expanded transportation, storage, warming centers, hotel stays



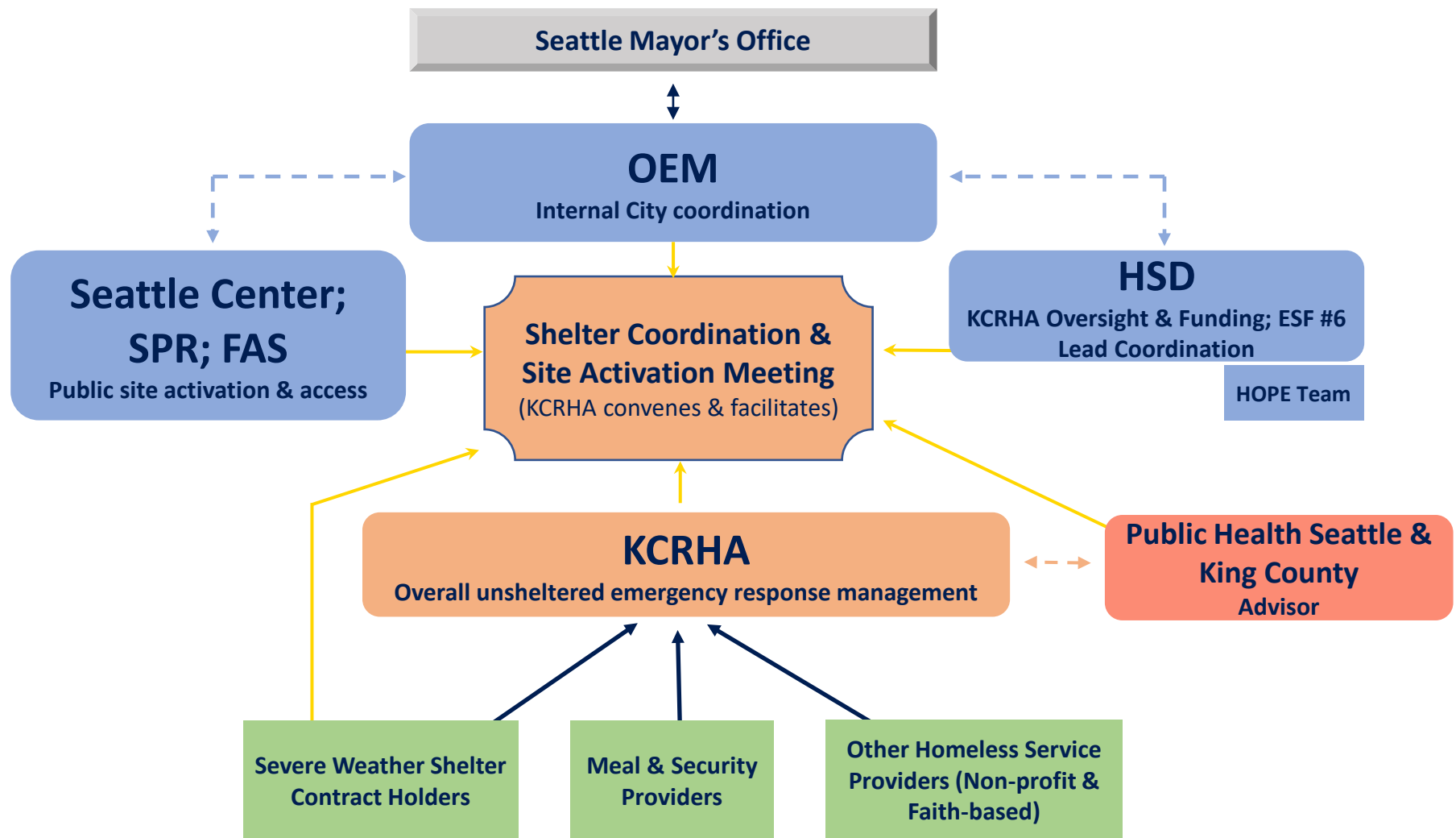
Where People Go

- Existing Emergency Shelters with Drop-In
- Existing Emergency Shelters with Expanded Capacity
- Stand-Up Severe Weather Shelters
- Stand-Up Warming Centers
- King County Library Locations
- Family Shelter Intake Line



Severe Weather Response by Subregion

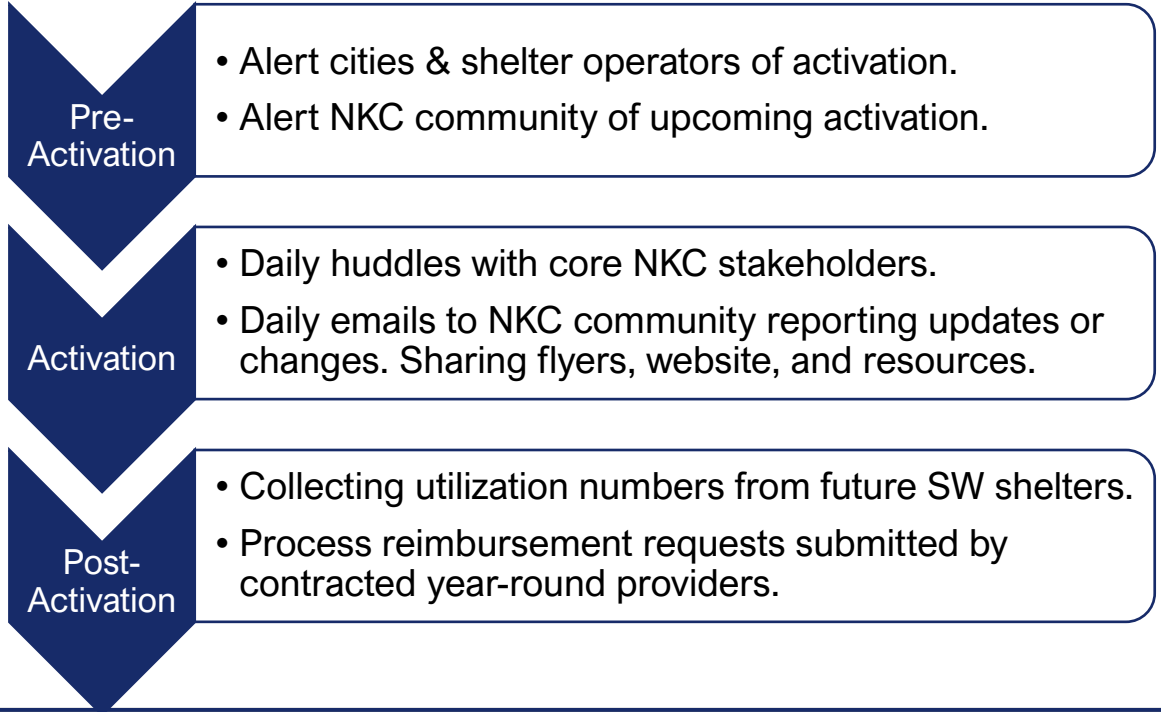




North King County

NKC Severe Weather Shelter coming in 2023

Funded through our partnership with Shoreline, Lake Forest Park, Kenmore, Bothell, Woodinville, & King County



East King County & Snoqualmie Valley

Pre-Activation

- Alert cities & providers of upcoming activation. Request expansion of shelters and day center hours.
- Alert EKC community of upcoming activation.

Activation

- Daily huddles with core EKC Severe Weather Stakeholders.
- Daily emails to EKC community of any updates or changes. Sharing flyers, website, and resources.

Post-Activation

- Collecting utilization numbers from shelters.
- Requesting feedback from shelters and community.
- Processing reimbursement requests for added operational costs.



South & South East King County

2023-24 Response:

- 2-4 Severe Weather Shelters
- 1 Overnight Warming Center
- 2 Emergency Shelters (out of 7) sometimes expand capacity.

Pre-Activation

- Alert cities & shelter operators of activation. Ask if they are planning to open / expand shelters.
- Alert SKC community of upcoming activation.

Activation

- Daily huddles or emails to check in on shelters
- Daily emails to SKC community of any updates or changes. Sharing flyers, website, and resources.

Post-Activation

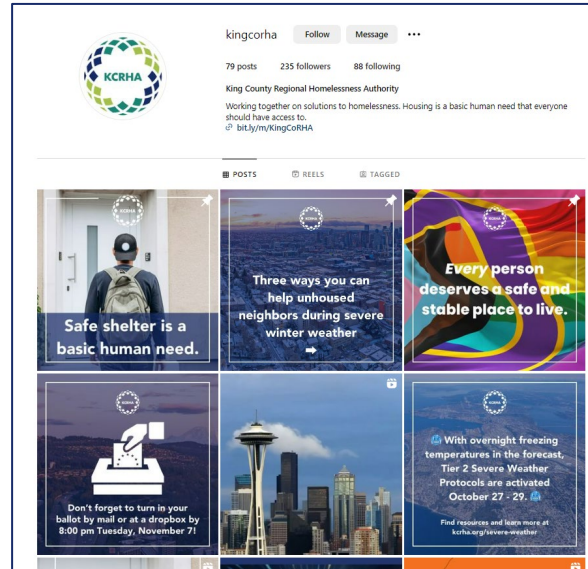
- Collecting utilization numbers from shelters.
- Requesting feedback from shelters and community.



General Public Comms

Information about severe weather activations is shared widely:

- KCRHA Website & Social Media
- Emails to providers, outreach teams, libraries, and other system partners.



KCRHA's Severe Weather Response Protocols are not currently active.

This page was last updated on Monday, October 30 at 11:30 am.

Across all seasons, Public Health of Seattle-King County has advice on [being prepared for hot weather](#), and [being prepared for wildfire smoke](#), and, in the case of extreme cold, [how to prevent and treat hypothermia](#).

Learn more about [thresholds for cold weather activation](#) or review our full [Severe Weather Policy](#).

Use the links below to find forecast information and year-round resources.

National Weather Service
Seattle Briefings

Year-Round Regional Services Database

Current Seattle Forecast

Shareable Graphics & Fliers	✓
Seattle	✓
North King County	✓
South King County	✓
East King County	✓
Snoqualmie Valley	✓
Ways the Community Can Help	✓

By the Numbers: 2022-23 Winter Weather: Seattle Only

- Nov 6-12: 6 nights; 63 people
- Nov 17-20: 3 nights
- Nov 28-Dec 12: 13 nights; 544 people
- Dec 14-24: 10 nights; 1084 people
- Jan 28-Feb 2: 5 nights; 180 people
- Feb 13-16: 3 nights; 116 people
- Feb 21-March 9: 16 nights; 1259 people

Longest: 16 nights

Shortest: 3 nights

Average: 8 nights

TOTAL:

56 nights of 151 night; 37% of the nights

(November 1st to March 31st)



Improving our Response

- Five-Year Plan Severe Weather Activities:
 - Expand number of Severe Weather Shelters
 - Coordinate & Centralize the Severe Weather Response Countywide
 - Expand Outreach During Severe Weather Events
 - Incorporate Severe Weather Funding into Existing Contracts
 - Improve Guests Connections to Services During & After Activation
- Shift to Seasonal Shelters
- Shoring up funding & reimbursement processes
- Exploring partnerships to equip and deploy community volunteers and to identify additional shelter host sites.

