



**KCRHA**  
King County Regional Homelessness Authority

## **KCRHA Leadership**

**KK** Kelly Kinnison  
Chief Executive Officer

**TW** Taj Wallace  
Executive Manager

**SF** Simon Foster  
Deputy Chief Executive Officer (starting 1/6/25)

**XM** Xochitl Maykovich  
Associate Deputy for Strategy (starting 2/10/25)

**JR** James Rouse  
Chief Financial Officer

**V** Vacant  
Chief External Affairs (Lisa Edge Acting CEA)

**EW** Edmund Witter  
General Counsel (starting 1/31/25)

**TF** Taurmini Fentress  
Chief of Equity & Impact

**IA** Irene Agustin  
Chief Program Officer

Finance manages all financial processes and decisions. This includes overseeing the entire lifecycle of service provider contracts, monitoring the Authority's budget, and working closely with funders.

External Affairs assess the regional government, community, and narrative landscape, establishes and maintains relationships with key leaders and partners across the region, and formulate and execute strategies to ensure broad-based support for the KCRHA's mission.

The Equity & Impact Division includes Community Impact (CI) and Ombuds Departments. CI is the data management, evaluation, analytics and research team at the KCRHA. Ombuds assists contract holders, community members, and participants in KCRHA-contracted programs in addressing issues and complaints related to service delivery, program management, policies, and other activities.

The Programs division is responsible for grant-funded and direct service-related strategies that include development, procurement, service delivery, contract management, monitoring, and oversight of the homelessness response system.

# Programs

**IA**  
**Irene Agustin**  
Chief Program Officer

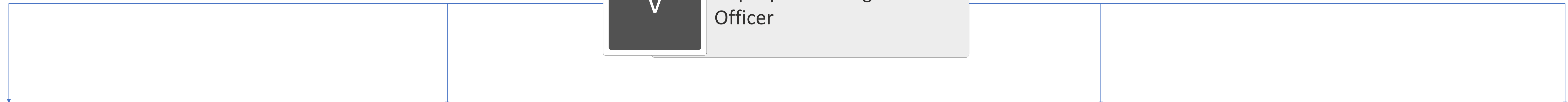
**V**  
**Vacant**  
Deputy Chief Program Officer

**JS**  
**Jeff Simms**  
Senior Director,  
Policy

**AH**  
**Arlene Hampton**  
Director, Homeless  
Investment

**MG**  
**Monica Gross**  
Director, Planning & Special  
Projects

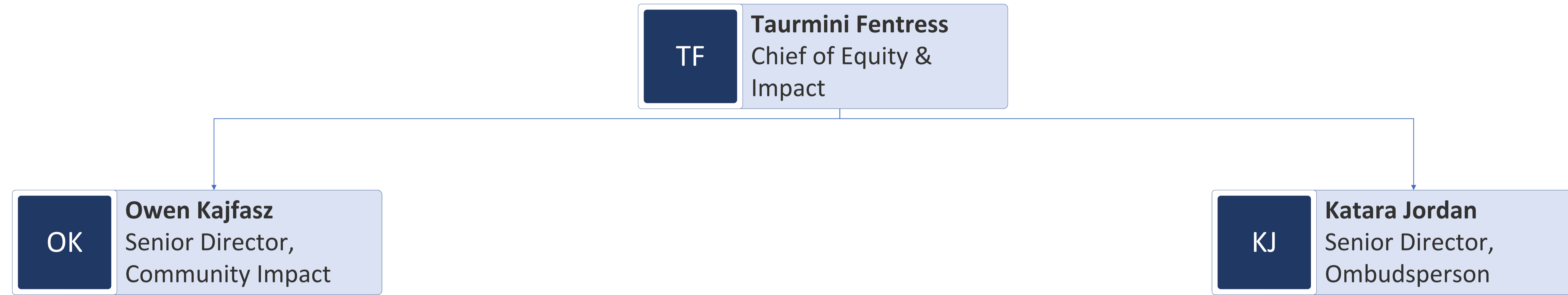
**BL**  
**Beth Lazar**  
Director, Access &  
Engagement



# Finance



# Equity & Impact



# External Affairs

**V** Vacant  
Chief of External Affairs

**LE** Lisa Edge  
Deputy Chief, External  
Affairs (Acting CEA)

